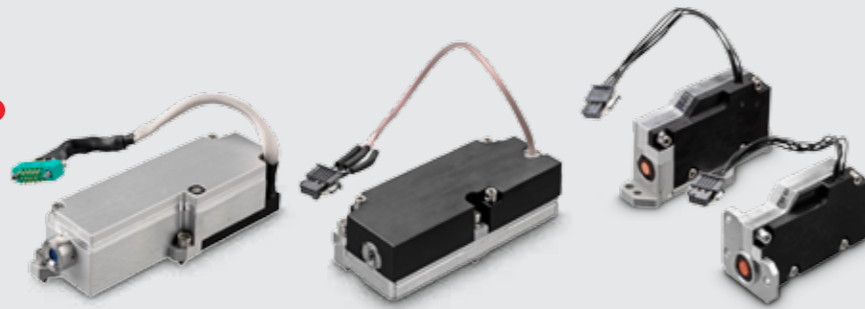


Optitask^{LTD}
Eye Safe Laser Transmitters

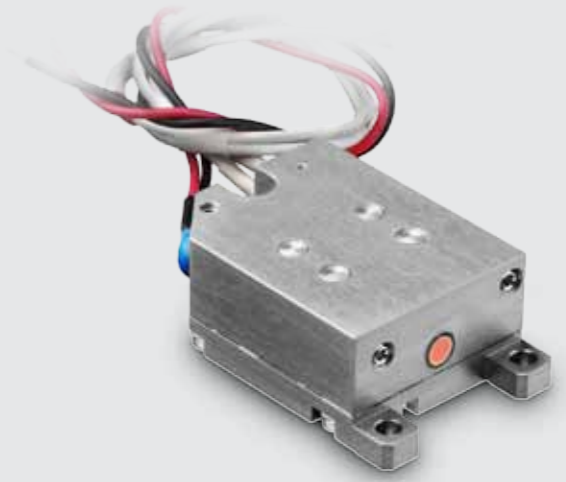
2017

**ER:GLASS
LASER TRANSMITTERS**



Product	OT-15	OT-16	OT-25
Laser beam wavelength	1.54 μm		
Repetition rate	20ppm/1pps burst	30ppm/1pps burst	10ppm
Output energy	>10 mJ	>2.5 mJ	>1.2 mJ
Beam divergence (80% of total energy)	<4 mr	<3 mr	<4 mr
Output beam diameter	4 mm	1.4 mm	1.2 mm
Pulse width	<35 ns	<40 ns	<24 ns
Weight	156 gr	75 gr	29/34 gr
Dimensions (LxWxH)	102x32.5x26 mm	72x29x20 mm	50.8x24.5x27.2 mm/ 61.4x19.1x30.7 mm
Pumping	flash lamp		
Q-switch type	active	passive	passive
Pumping energy	<8 J	<5.5 J	<4 J
Operational temperature	-40/+65 °C	-32/+55 °C	-32/+55 °C

**ER:GLASS
LASER TRANSMITTERS**



Product	OT-29	OT-39
Laser beam wavelength	1.54 μm	
Repetition rate	1pps continuous/5pps burst	
Average output energy	>1.2 mJ	>3 mJ
Beam divergence (80% of total energy)	<4 mr	
Output beam diameter	0.8 mm	
Pulse width (FWHM)	10 nsec	
Weight	60 gr	
Dimensions (LxWxH)	46 x 30.5 x 17.4 mm	
Pumping	diode laser	
Q-switch type	passive	
Electrical interface	100A/2V	100A/4V
Conductive cooling requirements	<0.8 W	<1.6 W
Operational temperature	-40/+75 °C	
Starting signal	built-in photodiode	

**HIGH REPETITION
ER:GLASS
LASER TRANSMITTERS**



Product	OT-03	OT-31	OT-32	OT-20
Laser beam wavelength	1.54 μm			
Repetition rate	10 pps	10 pps	15 pps	20 pps
Average output energy	>10 mJ	>7 mJ	>10 mJ	>10 mJ
Beam divergence (80% of total energy)	<4 mr	<2 mr	<1.2 mr	<4 mr
Output beam diameter	4 mm	4 mm	4 mm	4 mm
Pulse width (FWHM)	<30 nsec			
Weight	360 gr			
Dimensions (LxWxH)	120x49x64 mm			
Pumping	diode laser			
Q-switch type	active			
Cooling	forced air on external heat exchanger			
Electrical interface	100A/12V & Q-switch			
Operational temperature	-40/+65 °C			
Heat dissipation	<15 W	<15 W	<20 W	<35 W

**ER:GLASS
LASER TRANSMITTERS**



Product	OT-17	OT-27	OT-37
Laser beam wavelength	1.54 μm		
Repetition rate	1pps	5pps	10pps
Output energy	>2.4 mJ	>2 mJ	>2 mJ
Beam divergence (80% of total energy)	<4 mr		
Output beam diameter	0.8 mm		
Pulse width (typical)	10 ns		
Weight	70 gr		
Dimensions (LxWxH)	62x30.5x16.8 mm		
Pumping	diode laser		
Q-switch type	passive		
Electrical interface	100A/4V		
Conductive cooling requirements	<1.2 W	<6 W	<12 W
Operational temperature	-40/+75 °C		
Starting signal	built-in photodiode		

ER:GLASS LASER TRANSMITTERS



Product	OT-33	OT-34
Laser beam wavelength	1.54 μm	
Repetition rate	1pps continuous/5pps burst	
Average output energy	>1 mJ	>2 mJ
Beam divergence (80% of total energy)	<4 mr	
Output beam diameter	0.8 mm	
Pulse width (FWHM)	10 nsec	8 nsec
Weight	25 gr	
Dimensions (LxWxH)	33x 21x14 mm	
Pumping	diode laser	
Q-switch type	passive	
Electrical interface	100A/2V	100A/4V
Conductive cooling requirements	<0.8 W	<1.6 W
Operational temperature	-40/+75 $^{\circ}\text{C}$	-40/+65 $^{\circ}\text{C}$
Starting signal	built-in photodiode	

Optitask Ltd

4/B, Hazoran Str., South Industrial Area
Netanya 4250604, Israel
Tel: +972-73-243-6600, Fax: +972-9-865-67-46
e-mail: sw@optitask.net www.optitask.net

Worldwide Connections:
Great Britain: matthew.ashton@pacer.co.uk
USA: shawn@rpmclasers.com
India: photonex13@gmail.com
Others: iv@optitask.com

